

NO. E1BV-2033

ISSUED: MAY.1998

REVISED: DEC.2011



HOSHIZAKI
SELF-CONTAINED CUBER

MODEL **IM-130WME**
IM-130WME-23

PARTS LIST

[HE, CHINA]

H-1	MAR. 1998	F-0	DEC. 2005
H-2	JUL. 1998	G-0	JAN. 2007
J-0	DEC. 1998	G-1	JUN. 2007
K-0	DEC. 1999	G-2	DEC. 2007
A-0	DEC. 2000	T-0	JAN. 2008
B-0	DEC. 2001	T-1	JUL. 2008
C-0	DEC. 2002	U-0	JAN. 2009
D-0	DEC. 2003	V-0	JAN. 2010
D-1	NOV. 2004	L-0	JAN. 2011
E-0	DEC. 2004		
E-1	APR. 2005		

MATERIAL ABBREVIATIONS

ALUMINUM

AL = Aluminum

COPPER

CU = Copper

PLASTIC

ABS = Acrylonitrile -butadiene - styrene
AC = Polyacetal
EVA = Ethylene vinyl acetate
PA = Polyamide = Nylon
PC = Polycarbonate
PE = Polyethylene
PES = Polyester
PETP = Polyethylene terephthalate = Tetlon
PP = Polypropylene
PS = Polystyrene
PTFE = Polytetrafluoroethylene = Teflon
PUR = Polyurethane
PVC = Polyvinyl chloride

RUBBER

VN = Vinyl Nitrile
EPDM = EP rubber
NBR = Nitrile butadiene rubber
NR = Natural rubber
NP = Neoprene
SI.R = Silicone rubber
SY.R = Synthetic rubber
EPH = Epichlorohydrin

STEEL

GS = Galvanized steel
SS = Stainless steel
PS = Plated steel
PAS = Primed steel

AUXILIARY CODE

K-0

Designates the year. "K" indicates the year 2000. Years progress or regress in alphabetical order. "J" is 1999, "L" is 2001, "M" is 2002, and so on. The letters "I" and "O" were skipped.
Designates significant part changes within the same year. Base is 0 and this number advances for each change.

Example: P-1

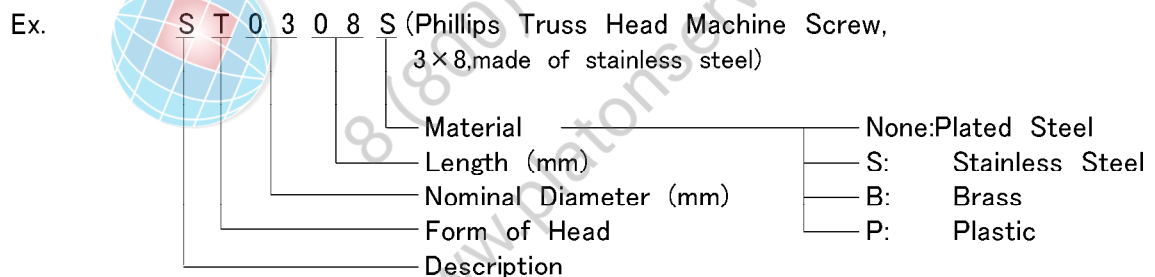
"P" indicates 2004.
"1" indicates the first significant part change for 2004.

MARKS LOCATED UNDER THE AUXILIARY CODE

- = Part deleted.
- x = Part deleted and replaced by "o" part.
- o = New part in place of "x" part.

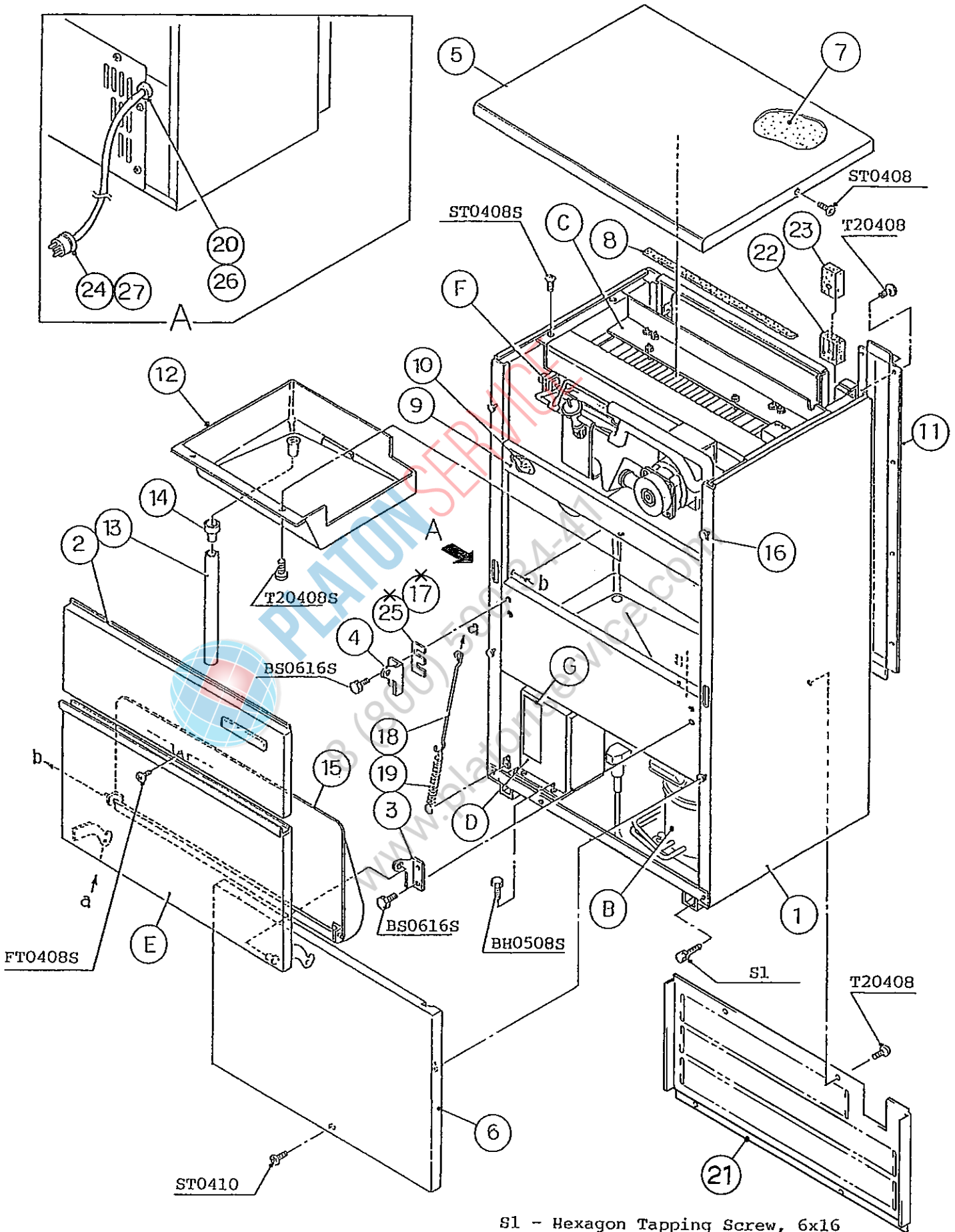
FASTENER ABBREVIATION LIST

ST	=	Phillips Truss Head Machine Screw
SP	=	Phillips Pan Head Machine Screw
SF	=	Phillips Flat Head Machine Screw
SS	=	Phillips Pan Head Machine Screw with Split Lock Washer
SW	=	Phillips Pan Head Machine Screw with Split Lock Washer and Flat Washer
T1	=	Phillips Truss Head Tapping Screw (Correspond to Type A)
T2	=	Phillips Truss Head Tapping Screw (Correspond to Type B)
T3	=	Phillips Truss Head Tapping Screw (Correspond to Type C)
FT	=	Phillips Truss Head Tapping Screw (Special)
BH	=	Hexagon Head Bolt
BC	=	Socket Head Cap Screw
BS	=	Hexagon Bolt with Split Washer
BW	=	Hexagon Bolt with Split Washer and Flat Washer
BF	=	Hexagon Flange Bolt
BR	=	Cross-Recessed Hexagon Head Bolt
BRW	=	Cross-Recessed Hexagon Head Bolt with Split Lock Washer and Flat Washer
WL	=	Split Lock Washer
WT	=	External Tooth Washer
WF	=	Flat Washer
WS	=	Spring Washer
NH	=	Hexagon Nut
NF	=	Hexagon Flange Nut
NC	=	Hexagon Cap Nut
NS	=	Square Nut
NW	=	Wing Nut



(Note) Second character is numerical except the list.
Ex: S1,S2,B3 etc.

And abbreviations and names are shown under the illustration.



S1 - Hexagon Tapping Screw, 6x16

HE

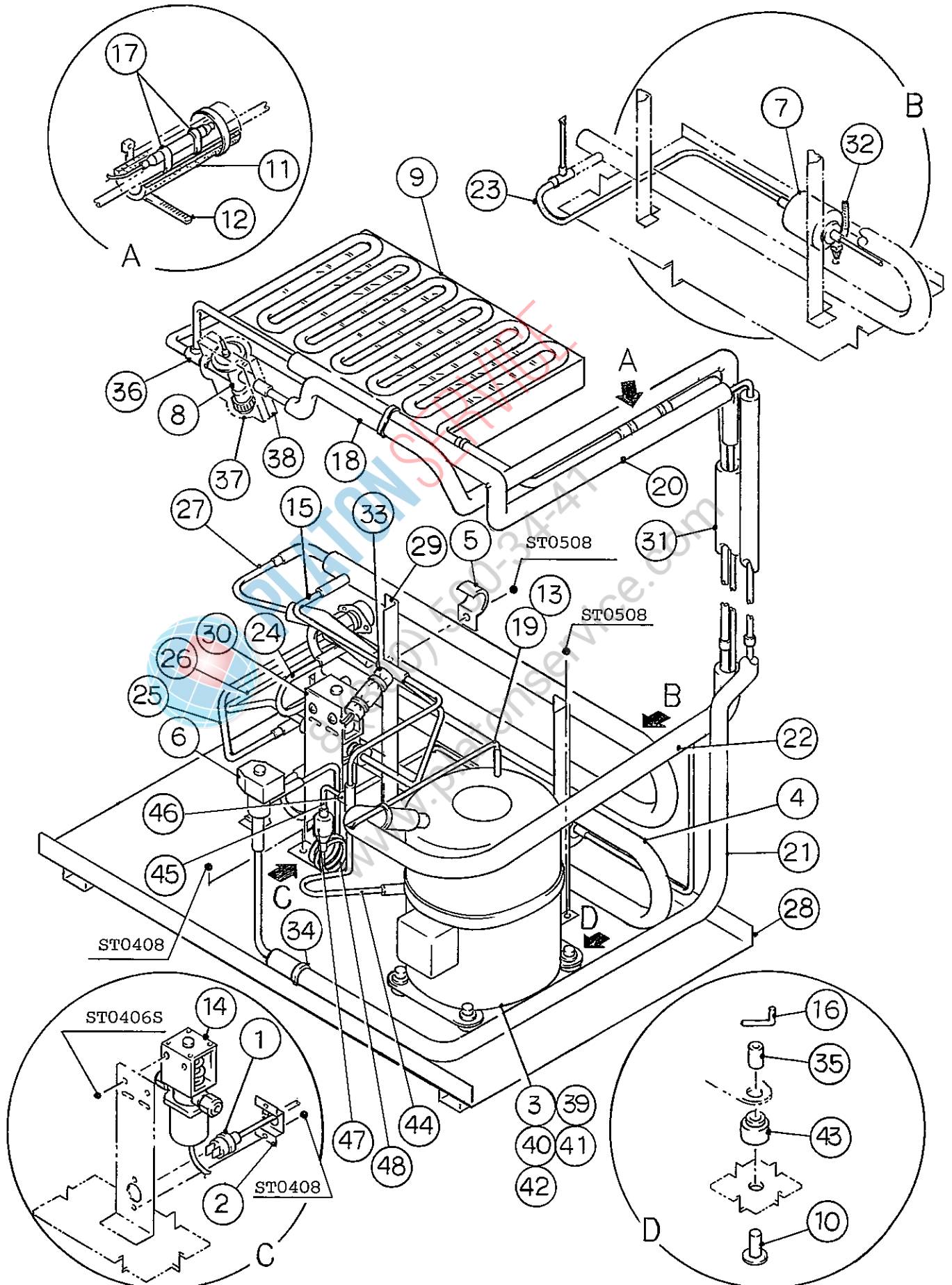
MODEL : IM-130WME							
IM-130WME-23				TITLE : A. ICE CUBER ASSY			
INDEX NO.	DESCRIPTION	MATERIAL OR MODEL NUMBER	PART NUMBER	REQ'D NUMBER			
				H-1	H-2,J-0 K-0,A-0 B-0,C-0 D-0	D-1 E-0	E-1 F-0 G-0
B	REFRIGERATION UNIT	(130WME)	1H1764A01	1	—		
			1H1764A02		1	1	1
	REFRIGERATION UNIT	(130WME-23)	-	1	1	1	1
C	ICE MAKING MECHANISM ASSY	(130WME)	1H0268A06	1	1	1	1
	ICE MAKING MECHANISM ASSY	(130WME-23)	-	1	1	1	1
D	CONTROL BOX ASSY	-	2H3668A02	1	1	—	
			2H3668A05			1	—
			2H6792A02				1
E	DOOR ASSY	-	3H1420A07	1	1	1	1
			3Y2909A01				
			3Y3817A01				
F	WATER CIRCUIT ASSY	-	3H9588A01	1	1	1	1
G	LABEL LOCATION	(130WME)	3X1601A01	1	1	1	—
			3X1601A02				1
	LABEL LOCATION	(130WME-23)	-	1	1	1	1
1	UNIT BODY	-	1H1259G02	1	1	1	1
			1H1259G04				
2	FRONT PANEL (UPPER)	S.S	3H8109G04	1	1	1	1
3	HINGE (RIGHT)	S.S	4H2583-01	1	1	1	1
4	HINGE (LEFT)	S.S	4H2584-01	1	1	1	1
5	TOP PANEL	S.S	3H9607-01	1	1	1	1
6	FRONT PANEL (LOWER)	S.S	2H3333-01	1	1	1	1
7	INSULATION - TOP PANEL		3H9602-01	1	1	1	1
8	SEAL	TP-230 t3x15x700	1H1762-44	1	1	1	1
9	FRONT FRAME	S.S	3H7761-04	1	1	1	1
10	INSULATION - FRONT FRAME	PE	4H2687-01	1	1	1	1
11	COVER - PIPE	G.S	3H1436-01	1	1	1	1
12	DRAIN PAN	ABS	2H1935-01	1	1	1	1
13	PIPE - DRAIN	ABS	4H2688-01	1	1	1	1
14	DRAIN TUBE	SI	4H2585-01	1	1	1	1
15	SLOPE	ABS	3H1452G01	1	1	1	1
16	TAPER COLLAR	S.S	4H0171-01	4	4	4	4
17	HINGE SPACER (B)	S.S	4H0605-02	1	1x		

HE,CHINA

MODEL : IM-130WME							
IM-130WME-23				TITLE : A. ICE CUBER ASSY			
INDEX NO.	DESCRIPTION	MATERIAL OR MODEL NUMBER	PART NUMBER	REQ'D NUMBER			
				G-1	G-2 T-0	T-1,U-0 V-0,L-0	
B	REFRIGERATION UNIT	(130WME)	-				
			1H1764A02	1	1	1	
	REFRIGERATION UNIT	(130WME-23)	-	1	1	1	
C	ICE MAKING MECHANISM ASSY	(130WME)	1H0268A06	1	1	1	
	ICE MAKING MECHANISM ASSY	(130WME-23)	-	1	1	1	
D	CONTROL BOX ASSY	-	-				
			2H6792A02	1	1	1	
E	DOOR ASSY	-	3H1420A07	1	-		
			3Y2909A01		1	-	
			3Y3817A01			1	
F	WATER CIRCUIT ASSY	-	3H9588A01	1	1	1	
G	LABEL LOCATION	(130WME)	-				
			3X1601A02	1	1	1	
	LABEL LOCATION	(130WME-23)	-	1	1	1	
1	UNIT BODY	-	1H1259G02	-			
			1H1259G04	1	1	1	
2	FRONT PANEL (UPPER)	S.S	3H8109G04	1	1	1	
3	HINGE (RIGHT)	S.S	4H2583-01	1	1	1	
4	HINGE (LEFT)	S.S	4H2584-01	1	1	1	
5	TOP PANEL	S.S	3H9607-01	1	1	1	
6	FRONT PANEL (LOWER)	S.S	2H3333-01	1	1	1	
7	INSULATION - TOP PANEL		3H9602-01	1	1	1	
8	SEAL	TP-230 t3x15x700	1H1762-44	1	1	1	
9	FRONT FRAME	S.S	3H7761-04	1	1	1	
10	INSULATION - FRONT FRAME	PE	4H2687-01	1	1	1	
11	COVER - PIPE	G.S	3H1436-01	1	1	1	
12	DRAIN PAN	ABS	2H1935-01	1	1	1	
13	PIPE - DRAIN	ABS	4H2688-01	1	1	1	
14	DRAIN TUBE	SI	4H2585-01	1	1	1	
15	SLOPE	ABS	3H1452G01	1	1	1	
16	TAPER COLLAR	S.S	4H0171-01	4	4	4	
17	-	-	-				

HE

MODEL : IM-130WME IM-130WME-23 TITLE : A. ICE CUBER ASSY							
INDEX NO.	DESCRIPTION	MATERIAL OR MODEL NUMBER	PART NUMBER	REQ'D NUMBER			
				H-1	H-2,J-0 K-0,A-0 B-0,C-0 D-0	D-1 E-0	E-1 F-0 G-0
18	HOOK	S.S	4H2685-01	1	1	1	1
19	SPRING	ZINC-PLATED WIRE	4H0823-01	1	1	1	1
20	CORD BUSHING	CEE-SR-6P-10	448949-01	1	1	1	1
21	REAR PANEL	S.S	3H9610-01	1	1	1	1
22	INSULATION (A)	PE	4H2683-01	1	1	1	1
23	INSULATION (B)	PE	4X5297-01	1	1	1	1
24	POWER SUPPLY CORD	(CONTINENTAL)	452263-01	1	1	1	1
	POWER SUPPLY CORD	(UK)	4X3521G01	1	1	1	1
25	HINGE SPACER (A)	S.S	4H0605-01	1	1x		



HE

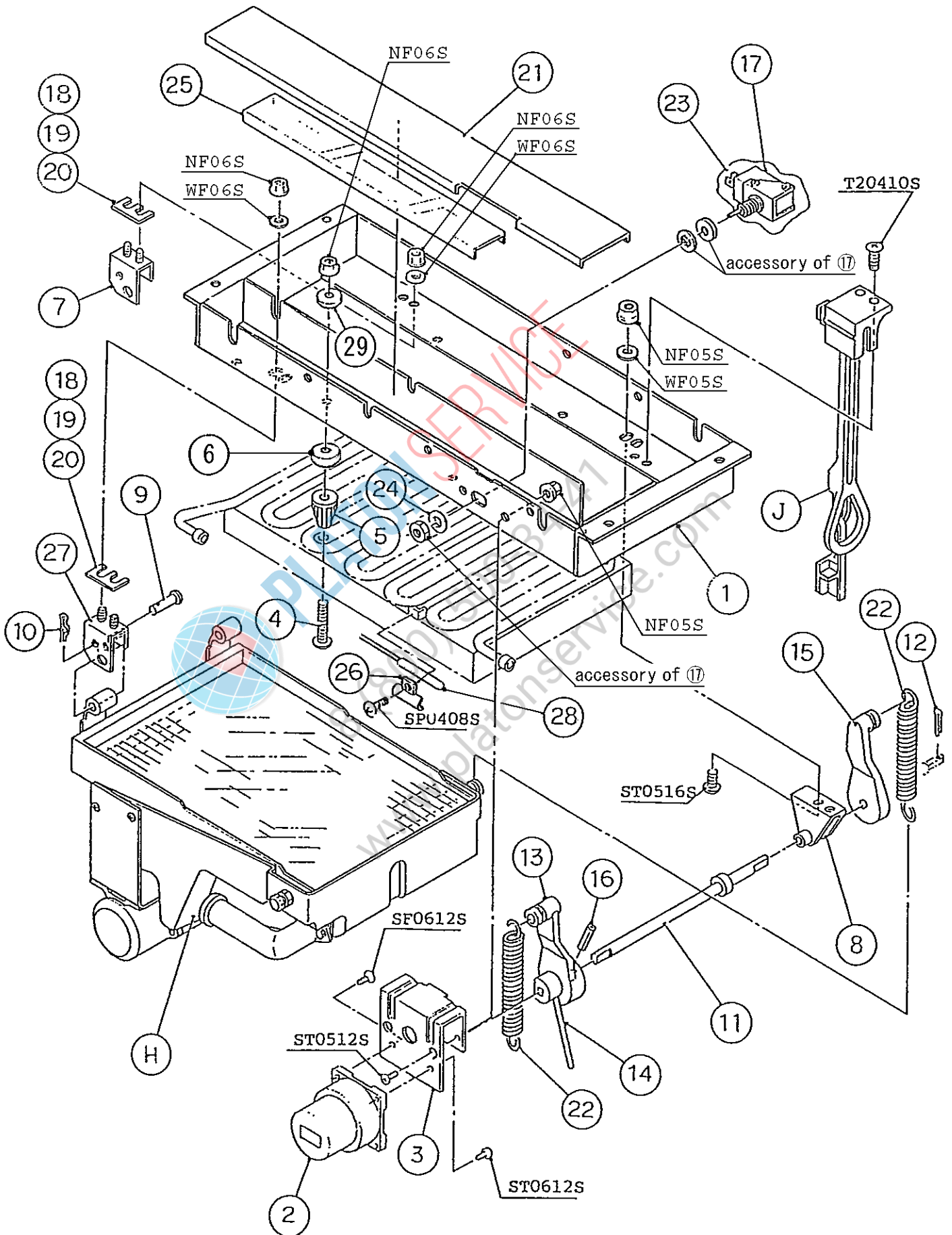
MODEL : IM-130WME IM-130WME-23								TITLE : B. REFRIGERATION UNIT			
INDEX NO.	DESCRIPTION	MATERIAL OR MODEL NUMBER	PART NUMBER	REQ'D NUMBER							
				H-1	H-2,J-0 K-0,A-0 B-0,C-0 D-0	D-1 E-0	E-1 F-0 G-0				
1	PRESSURE SWITCH	ACB-CB80	446649-01	1	1	1	1				
2	BRACKET - PRESSURE SWITCH	-	425506-01	1	1	1	1				
3	COMPRESSOR	SC12DL	454833-01	1	1	1	1				
4	CONDENSER	(S-0396)	2H0694G02	1	1	1	1				
5	CLAMP (B) - CON.	G.S	4H0622-01	4	4	4	4				
6	HOT GAS VALVE	ATS-7S10HD-1	418636-02	1	1	1	1				
7	DRIER	DML032.5S	462965-01	1	1	1	1				
8	EXPANSION VALVE	FSE-5NHD-1	454835-01	1	1	1	1				
9	EVAPORATOR	(130WME)	2H6438G01	1	1	1	1				
	EVAPORATOR (S-0796)	(130WME-23)	2H1836G01	1	1	1	1				
10	STEEL PIN	-	452255-01	4	4	4	4				
11	INSULATION	φ25xφ35xL130	4X8643-01	1	1	1	1				
12	TIE	CV-150	7920-0003	6	6	6	6				
13	TIE	CV-100	7920-0002	7	7	7	7				
14	WATER REGULATOR	WV II -33HHD-2	445491-02	1	1	1	1				
15	COPPER TUBE (A-1) - HIGH SIDE	COPPER	4H4569G02	1	1	1	1				
16	CLIP	-	452256-01	4	4	4	4				
17	CLIP	068N2531	452254-01	2	2	2	2				
18	HEAT EXCHANGER	COPPER	4X5034G02	1	-						
		COPPER	4X5034G04		1	1	1				
19	PROCESS TUBE	COPPER	4X4459-01	1	1	1	1				
20	PIPE (A) - HOT GAS	COPPER	4X5120G01	1	1	1	1				
21	PIPE (B) - HOT GAS	COPPER	3X1126G01	1	1	1	1				
22	PIPE (B) - LOW SIDE	COPPER	3X0125G01	1	-						
		COPPER	3X1868G01		1	1	1				
23	PIPE (B) - HIGH SIDE	COPPER	4X4597G01	1	1	1	1				
24	U BEND	-	4X5726-01	1	1	1	1				
25	PIPE (A) - WATER SUPPLY	COPPER	4H2768-01	1	1	1	1				
26	PIPE (B) - WATER SUPPLY	COPPER	4H2769-01	1	1	1	1				
27	PIPE (C) - WATER SUPPLY	COPPER	4X6100G01	1	1	1	1				
28	BASE		3Y2586G02	1	1	1	1				
29	BRACE - CONDENSER	2H3363A02	4H0564-01	2	2	2	2				
30	BRACKET - PRESSURE SWITCH		4X5632-01	1	1	1	1				
31	INSULATION TUBE		φ20xφ30xL800	1H1764-28	1	1	1	1			

HE,CHINA

MODEL : IM-130WME							
IM-130WME-23				TITLE : B. REFRIGERATION UNIT			
INDEX NO.	DESCRIPTION	MATERIAL OR MODEL NUMBER	PART NUMBER	REQ'D NUMBER			
				G-1	G-2 T-0	T-1,U-0 V-0,L-0	
1	PRESSURE SWITCH	ACB-CB80	446649-01	1	1	1	
2	BRACKET - PRESSURE SWITCH	-	425506-01	1	1	1	
3	COMPRESSOR	SC12DL	454833-01	1	1	1	
4	CONDENSER	(S-0396)	2H0694G02	1	1	1	
5	CLAMP (B) - CON.	G.S	4H0622-01	4	4	4	
6	HOT GAS VALVE	ATS-7S10HD-1	418636-02	1	1	1	
7	DRIER	DML032.5S	462965-01	1	1	1	
8	EXPANSION VALVE	FSE-5NHD-1	454835-01	1	1	1	
9	EVAPORATOR	(130WME)	2H6438G01	1	1	1	
	EVAPORATOR (S-0796)	(130WME-23)	2H1836G01	1	1	1	
10	STEEL PIN	-	452255-01	4	4	4	
11	INSULATION	φ25xφ35xL130	4X8643-01	1	1	1	
12	TIE	CV-150	7920-0003	6	6	6	
13	TIE	CV-100	7920-0002	7	7	7	
14	WATER REGULATOR	WV II -33HHD-2	445491-02	1	1	1	
15	COPPER TUBE (A-1) - HIGH SIDE	COPPER	4H4569G02	1	1	1	
16	CLIP	-	452256-01	4	4	4	
17	CLIP	068N2531	452254-01	2	2	2	
18	HEAT EXCHANGER	-	-				
		COPPER	4X5034G04	1	1	1	
19	PROCESS TUBE	COPPER	4X4459-01	1	1	1	
20	PIPE (A) - HOT GAS	COPPER	4X5120G01	1	1	1	
21	PIPE (B) - HOT GAS	COPPER	3X1126G01	1	1	1	
22	PIPE (B) - LOW SIDE	-	-				
		COPPER	3X1868G01	1	1	1	
23	PIPE (B) - HIGH SIDE	COPPER	4X4597G01	1	1	1	
24	U BEND	-	4X5726-01	1	1	1	
25	PIPE (A) - WATER SUPPLY	COPPER	4H2768-01	1	1	1	
26	PIPE (B) - WATER SUPPLY	COPPER	4H2769-01	1	1	1	
27	PIPE (C) - WATER SUPPLY	COPPER	4X6100G01	1	1	1	
28	BASE		3Y2586G02	1	1	1	
29	BRACE - CONDENSER	2H3363A02	4H0564-01	2	2	2	
30	BRACKET - PRESSURE SWITCH		4X5632-01	1	1	1	
31	INSULATION TUBE		φ20xφ30xL800	1H1764-28	1	1	1

HE,CHINA

MODEL : IM-130WME							
IM-130WME-23			TITLE : B. REFRIGERATION UNIT				
INDEX NO.	DESCRIPTION	MATERIAL OR MODEL NUMBER	PART NUMBER	REQ'D NUMBER			
				G-1	G-2 T-0	T-1,U-0 V-0,L-0	
32	TIE	T50RSF	436156-02	1	1	1	
33	INSULATION TUBE	-	4H9594-01	1	1	1	
34	TIE	-	436156-01	1	1	1	
35	WASHER	-	450894-01	4	4	4	
36	TEE	(130WME-23)	420335-01	1	1	1	
37	COVER (A) - EXP. VALVE	PE	4H9239-01	1	1	1	
38	COVER (B) - EXP. VALVE	PE	4H9239-02	1	1	1	
39	STARTING RELAY	117U6019	452237-01	1	1	1	
40	STARTING CAPACITOR	117U5019	456350-01	1	1	1	
41	CORD RELIEF	103N1004	452239-01	1	1	1	
42	COVER	103N2009	459924-01	1	1	1	
43	RUBBER GROMMET	-	450897-01	4	4	4	
44	COPPER TUBE (A-2) - HIGH SIDE	COPPER	4X5628-01	1	1	1	
45	PIPE (A-3-1) - HIGH SIDE	COPPER	4H2761-01	1	1	1	
46	TEE	COPPER	420041-02	1	1	1	
47	STRAINER	COPPER	430365-01	1	1	1	
48	PIPE (A-3-2) - HIGH SIDE	COPPER	4H2761-02	1	1	1	

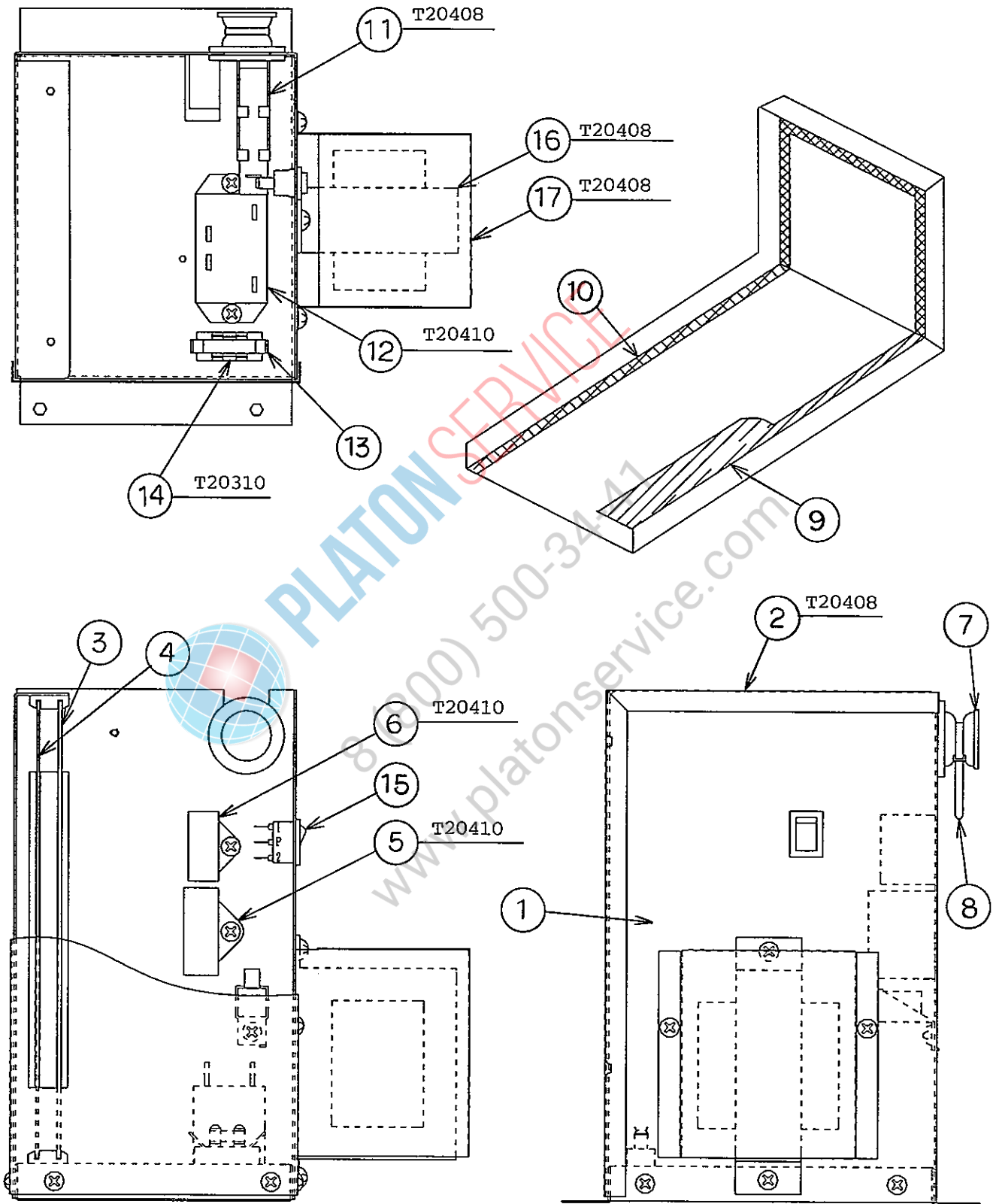


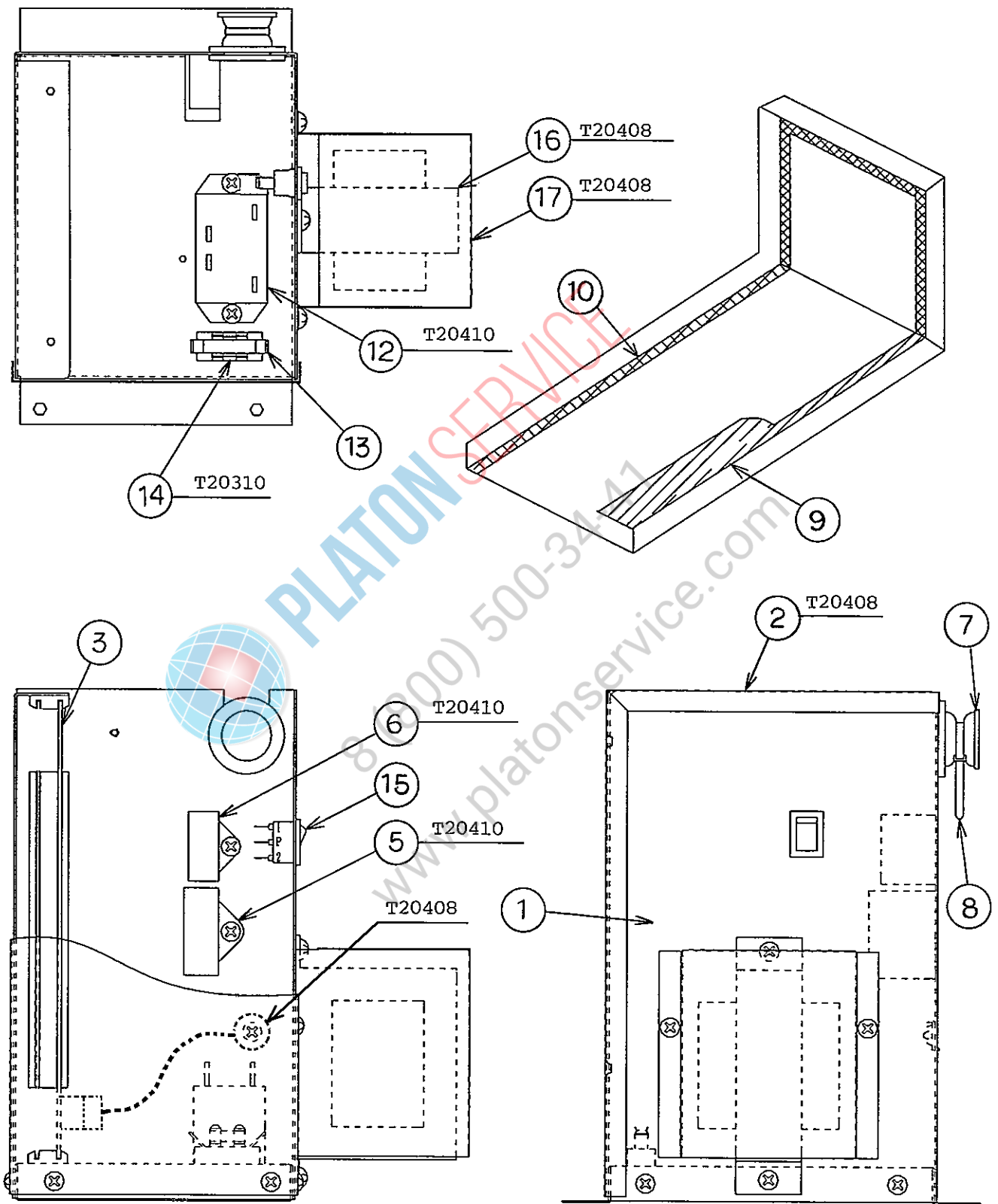
HE

MODEL : IM-130WME IM-130WME-23								TITLE : C. ICE MAKING MECHANISM ASSY			
INDEX NO.	DESCRIPTION	MATERIAL OR MODEL NUMBER	PART NUMBER	REQ'D NUMBER							
				H-1	H-2,J-0 K-0,A-0 B-0,C-0 D-0	D-1 E-0	E-1 F-0 G-0				
H	WATER PAN ASSY	-	2H0679A03	1	1	1	1				
J	BIN CONTROL SWITCH ASSY	(S-0819)	3H1538A02	1	1	1	1				
1	BRACKET - ICE MAKING MECHANISM	PAINTED STEEL	3H9594-01	1	1	1	1				
2	ACTUATOR MOTOR	SR65A41-13	452499-01	1	1	1	1				
3	BRACKET - ACTUATOR MOTOR	PAINTED STEEL	4H2679-01	1	1	1	1				
4	BOLT - EVAPORATOR MOUNTING	(130WME)	4H2678-01	4	4	4	4				
	BOLT - EVAPORATOR MOUNTING	(130WME-23)	4H2886-01	4	4	4	4				
5	COLLAR		3H3879-01	4	4	4	4				
6	WASHER	(130WME-23)	4H1365-05	4	4	4	4				
7	BEARING PLATE	S.S	3H1440G04	1	1	1	1				
8	BEARING - CAM SHAFT	POM	3X8307-01	1	1	1	1				
9	SHAFT (B)	S.S	4H1184-02	2	2	2	2				
10	SNAP PIN	S.S, No.6	715S-0600	2	2	2	2				
11	CAM SHAFT	S.S	4H2702G01	1	1	1	1				
12	SPLIT PIN	S.S, 2x12	711S-0212	1	1	1	1				
13	CAM (A)	(303881A02)	306543G02	1	1	1	1				
14	CHANGE LEVER	S.S	406261-01	1	1	1	1				
15	CAM (B)	AC	315775-01	1	1	1	1				
16	SPRING PIN	S.S, 3x28	712S-0328	1	1	1	1				
17	TOGGLE SWITCH	VAT4-71	431977-01	1	1	1	1				
18	SHIM (A) - EVAPORATOR	S.S	4H2691-01	REQ'D	REQ'D	REQ'D	REQ'D				
19	SHIM (B) - EVAPORATOR	S.S	4H2691-02	REQ'D	REQ'D	REQ'D	REQ'D				
20	SHIM (C) - EVAPORATOR	S.S	4H2691-03	REQ'D	REQ'D	REQ'D	REQ'D				
21	COVER - ICE MAKING MECHANISM BRACKET	PVC	4H2681-01	1	1	1	1				
22	SPRING	S.S	4H0287-01	2	2	2	2				
23	COVER - THERMISTOR	PE	408163-01	1	1	1	1				
24	WASHER - TOGGLE SWITCH	S.S	406196-01	1	1	1	1				
25	GUIDE - CONNECTOR	PVC	4H5619-01	1	1	1	1				
26	HOLDER - THERMISTOR	PE	3H9642-01	1	1	1	1				
27	BEARING PLATE	S.S	3H1440G03	1	1	1	1				
28	THERMISTOR-CUBE CONTROL	-	462976-03	1	1	1	1				
29	WASHER	AC	4H0777-01	4	4	4	4				

HE,CHINA

MODEL : IM-130WME							
IM-130WME-23 TITLE : C. ICE MAKING MECHANISM ASSY							
INDEX NO.	DESCRIPTION	MATERIAL OR MODEL NUMBER	PART NUMBER	REQ'D NUMBER			
				G-1	G-2 T-0	T-1,U-0 V-0,L-0	
H	WATER PAN ASSY	-	2H0679A03	1	1	1	
J	BIN CONTROL SWITCH ASSY	(S-0819)	3H1538A02	1	1	1	
1	BRACKET - ICE MAKING MECHANISM	PAINTED STEEL	3H9594-01	1	1	1	
2	ACTUATOR MOTOR	SR65A41-13	452499-01	1	1	1	
3	BRACKET - ACTUATOR MOTOR	PAINTED STEEL	4H2679-01	1	1	1	
4	BOLT - EVAPORATOR MOUNTING	(130WME)	4H2678-01	4	4	× 4	
	SCREW EVAPORATOR		4Y4922M02			○4	
	BOLT - EVAPORATOR MOUNTING	(130WME-23)	4H2886-01	4	4	× 4	
	SCREW EVAPORATOR		4Y4922M03			○4	
5	COLLAR		3H3879-01	4	4	4	
6	WASHER	(130WME-23)	4H1365-05	4	4	4	
7	BEARING PLATE	S.S	3H1440G04	1	1	1	
8	BEARING - CAM SHAFT	POM	3X8307-01	1	1	1	
9	SHAFT (B)	S.S	4H1184-02	2	2	2	
10	SNAP PIN	S.S, No.6	715S-0600	2	2	2	
11	CAM SHAFT	S.S	4H2702G01	1	1	1	
12	SPLIT PIN	S.S, 2x12	711S-0212	1	1	1	
13	CAM (A)	(303881A02)	306543G02	1	1	1	
14	CHANGE LEVER	S.S	406261-01	1	1	1	
15	CAM (B)	AC	315775-01	1	1	1	
16	SPRING PIN	S.S, 3x28	712S-0328	1	1	1	
17	TOGGLE SWITCH	VAT4-71	431977-01	1	1	1	
18	SHIM (A) - EVAPORATOR	S.S	4H2691-01	REQ'D	REQ'D	REQ'D	
19	SHIM (B) - EVAPORATOR	S.S	4H2691-02	REQ'D	REQ'D	REQ'D	
20	SHIM (C) - EVAPORATOR	S.S	4H2691-03	REQ'D	REQ'D	REQ'D	
21	COVER - ICE MAKING MECHANISM BRACKET	PVC	4H2681-01	1	1	1	
22	SPRING	S.S	4H0287-01	2	2	2	
23	COVER - THERMISTOR	PE	408163-01	1	1	1	
24	WASHER - TOGGLE SWITCH	S.S	406196-01	1	1	1	
25	GUIDE - CONNECTOR	PVC	4H5619-01	1	1	1	
26	HOLDER - THERMISTOR	PE	3H9642-01	1	1	1	
27	BEARING PLATE	S.S	3H1440G03	1	1	1	
28	THERMISTOR-CUBE CONTROL	-	462976-03	1	1	1	
29	WASHER	AC	4H0777-01	4	4	4	





HE

MODEL : IM-130WME							
IM-130WME-23				TITLE : D. CONTROL BOX ASSY			
INDEX NO.	DESCRIPTION	MATERIAL OR MODEL NUMBER	PART NUMBER	REQ'D NUMBER			
				H-1	H-2,J-0 K-0,A-0 B-0,C-0 D-0	D-1 E-0	E-1 F-0 G-0
1	CONTROL BOX	G.S	3H9453G02	1	1	—	
			3H9453G04			1	1
2	COVER - CONTROL BOX	G.S	3H9456-01	1	1	1	1
3	CONTROLLER BOARD	H2AA136C03	436572-03	1	1	1	—
		H2AE024C18	462975-18				1
4	SHIELD PLATE	G.S	4H2594-01	1	1	1	×
5	CAPACITOR - PUMP MOTOR	4.0 μ F	416920-02	1	1	1	1
6	CAPACITOR - ACTUATOR MOTOR	0.8 μ F	456262-01	1	1	1	1
7	GROMMET	NBR	4H2568-01	1	1	1	1
8	NYLON TIE	PRT1.5S	427466-01	1	1	1	1
9	CUSHION	20x210x2.5t, PE	4H2718-01	1	1	1	1
10	SEAL TAPE	w12xt3.0	2H3668-18	1	1	1	1
11	SURGE ABSORBER	-	436573-02	1	1	1	×
12	POWER RELAY	G7L-1A-TUB	449000-01	1	1	1	1
13	FUSE	5A	451924-01	1	1	1	1
14	FUSE HOLDER	445710	451925-01	1	1	—	
		CFH15	4Y2547-01			1	1
15	ROCKER SWITCH	H8600VB	460681-01	1	1	1	1
16	TRANSFORMER	-	450104-01	1	1	1	1
17	COVER - TRANSFORMER	-	4X4065-01	1	1	1	1

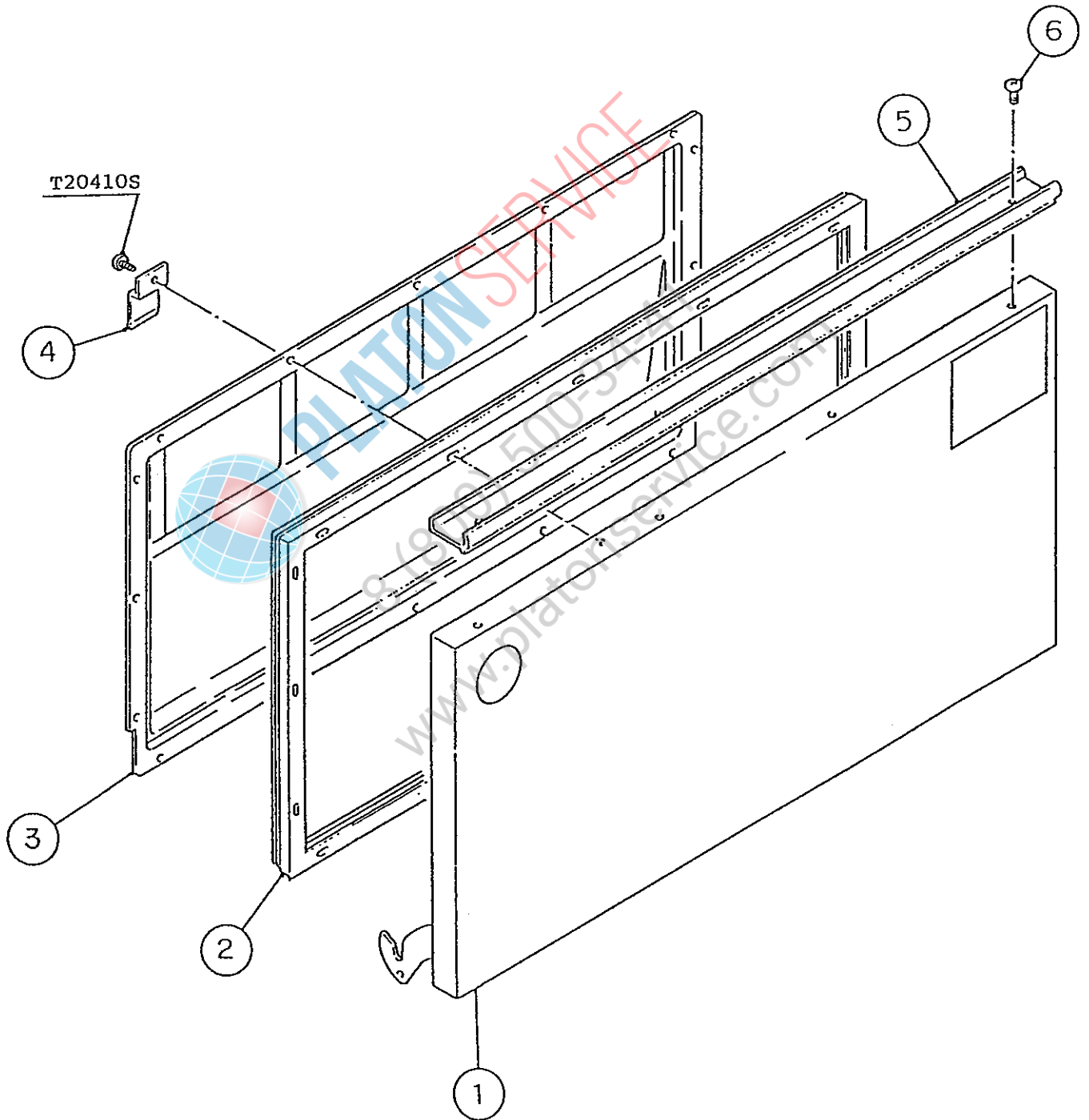
HE,CHINA

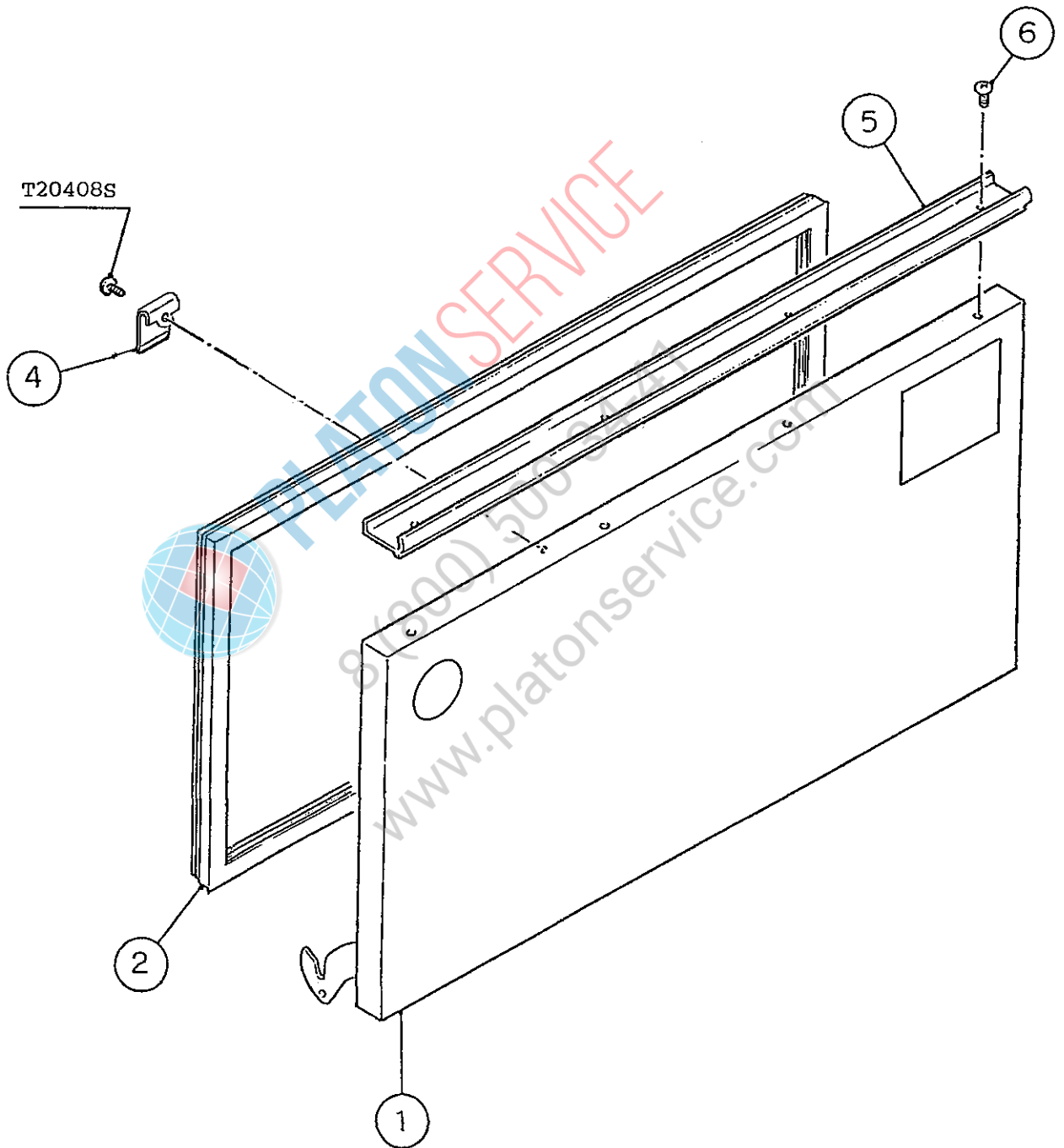
MODEL : IM-130WME							
IM-130WME-23				TITLE : D. CONTROL BOX ASSY			
INDEX NO.	DESCRIPTION	MATERIAL OR MODEL NUMBER	PART NUMBER	REQ'D NUMBER			
				G-1	G-2 T-0	T-1,U-0 V-0,L-0	
1	CONTROL BOX	-	-				
		G.S	3H9453G04	1	1	1	
2	COVER - CONTROL BOX	G.S	3H9456-01	1	1	1	
3	CONTROLLER BOARD	-	-				
		H2AE024C18	462975-18	1	1	1	
4	-	-	-				
5	CAPACITOR - PUMP MOTOR	4.0µF	416920-02	1	1	1	
6	CAPACITOR - ACTUATOR MOTOR	0.8µF	456262-01	1	1	1	
7	GROMMET	NBR	4H2568-01	1	1	1	
8	NYLON TIE	PRT1.5S	427466-01	1	1	1	
9	CUSHION	20x210x2.5t, PE	4H2718-01	1	1	1	
10	SEAL TAPE	w12xt3.0	2H3668-18	1	1	1	
11	-	-	-				
12	POWER RELAY	G7L-1A-TUB	449000-01	1	1	1	
13	FUSE	5A	451924-01	1	1	1	
14	FUSE HOLDER	-	-				
		CFH15	4Y2547-01	1	1	1	
15	ROCKER SWITCH	H8600VB	460681-01	1	1	1	
16	TRANSFORMER	-	450104-01	1	1	1	
17	COVER - TRANSFORMER	-	4X4065-01	1	1	1	

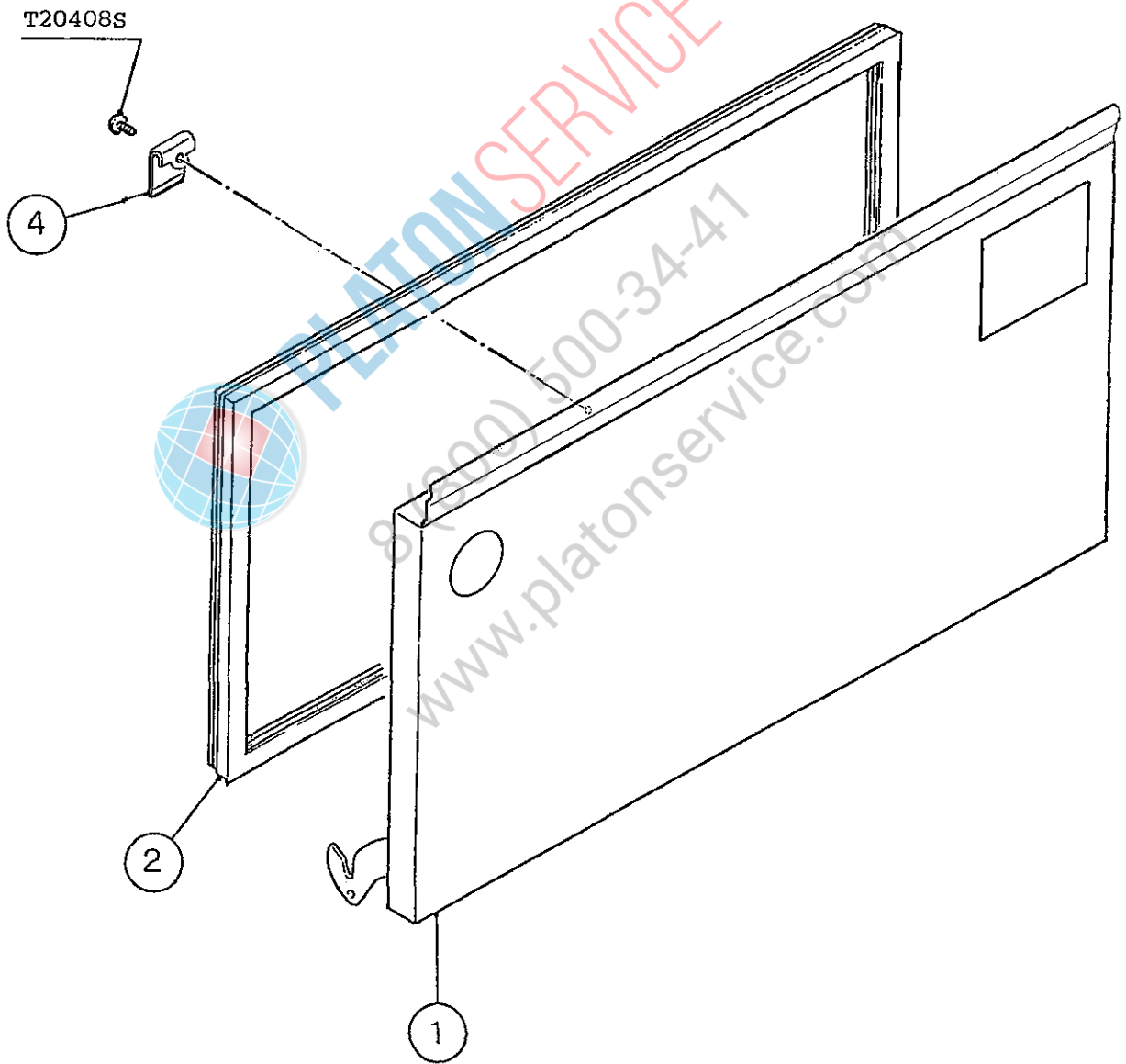
IM-130WME
IM-130WME-23

E. DOOR ASSY

(G-0) (G-1)
(D-1) (E-0) (E-1) (F-0)
(A-0) (B-0) (C-0) (D-0)
(H-1) (H-2) (J-0) (K-0)





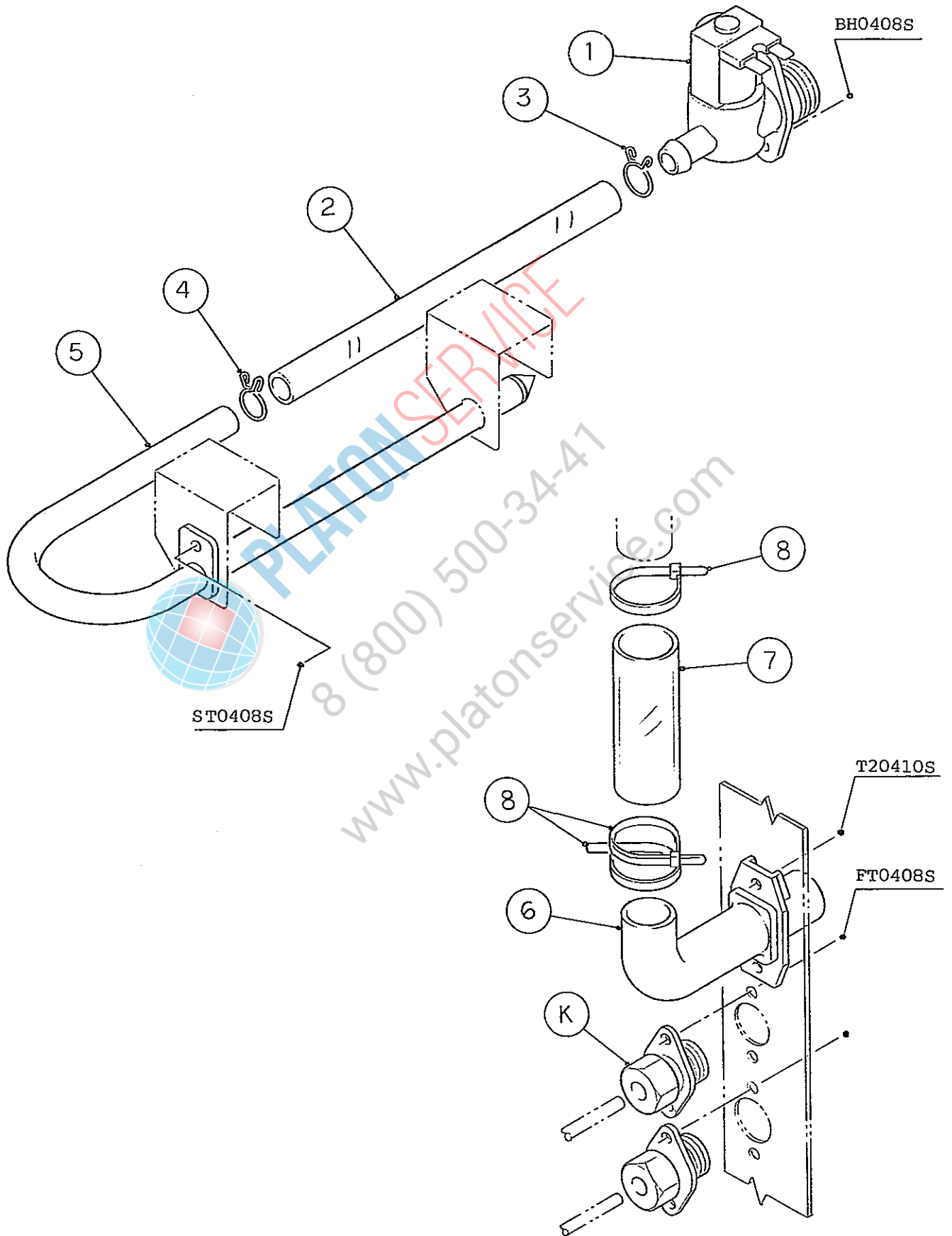


HE

MODEL : IM-130WME IM-130WME-23								TITLE : E. DOOR ASSY			
INDEX NO.	DESCRIPTION	MATERIAL OR MODEL NUMBER	PART NUMBER	REQ'D NUMBER							
				H-1	H-2,J-0 K-0,A-0 B-0,C-0 D-0	D-1 E-0	E-1 F-0 G-0				
1	DOOR	S.S	3H9272G01	1	1	1	1				
		S.S	3Y2908G01								
		S.S	3Y3816G01								
2	GASKET	PVC RUBBER	3H1431-03	1	1	1	1				
		PVC RUBBER	3X3545-04								
3	REVERSE COVER	ABS	3X4833-01	1	1	1	1				
4	CATCH - SLOPE	S.S	4H0439-01	1	1	1	1				
		S.S	4X7644-01								
5	HANDLE	ABS	328924-04	1	1	1	1				
6	TAPPING SCREW - BLACK	STEEL, 4x8	433954-01	4	4	4	4				

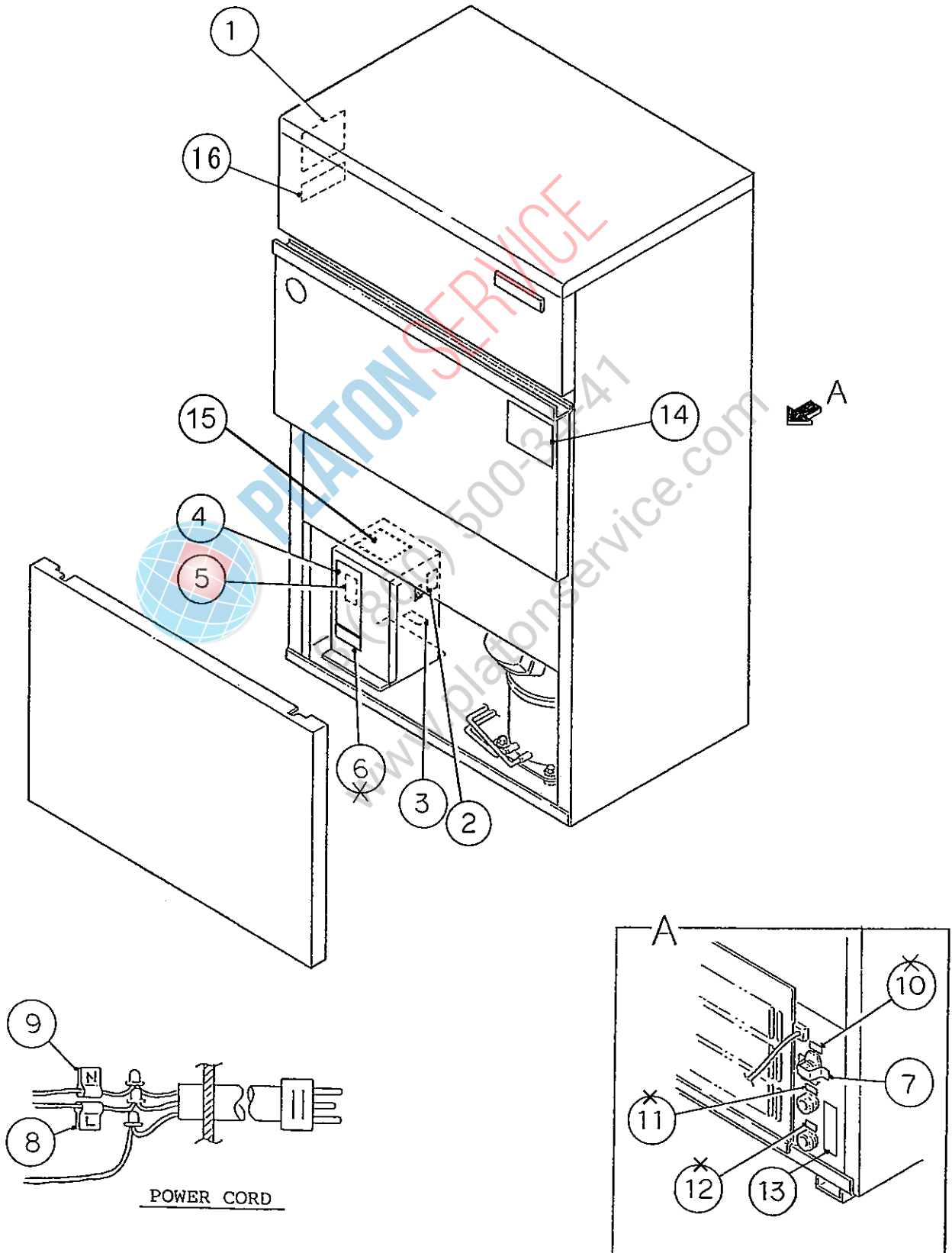
HE,CHINA

MODEL : IM-130WME							
IM-130WME-23				TITLE : E. DOOR ASSY			
INDEX NO.	DESCRIPTION	MATERIAL OR MODEL NUMBER	PART NUMBER	REQ'D NUMBER			
				G-1	G-2 T-0	T-1,U-0 V-0,L-0	
1	DOOR	S.S	3H9272G01	1	—		
		S.S	3Y2908G01		1	—	
		S.S	3Y3816G01			1	
2	GASKET	PVC RUBBER	3H1431-03	1	—		
		PVC RUBBER	3X3545-04		1	1	
3	REVERSE COVER	ABS	3X4833-01	1	×		
4	CATCH - SLOPE	S.S	4H0439-01	1	—		
		S.S	4X7644-01		1	1	
5	HANDLE	ABS	328924-04	1	1	×	
6	TAPPING SCREW - BLACK	STEEL, 4x8	433954-01	4	4	×	



HE

MODEL : IM-130WME IM-130WME-23				TITLE : F. WATER CIRCUIT ASSY			
INDEX NO.	DESCRIPTION	MATERIAL OR MODEL NUMBER	PART NUMBER	REQ'D NUMBER			
				H-1	H-2,J-0 K-0,A-0 B-0,C-0 D-0	D-1 E-0	E-1 F-0 G-0
K	FITTING (P) ASSY	(S-10101)	3Y0747A01	2	2	2	2
1	WATER VALVE	V18, 3.8 lit./min.	452138-01	1	1	1	1
2	SILICONE HOSE	7730-1215, L=200	3H9588-03	1	1	1	1
3	CLAMP	SK-15	435934-03	1	1	1	1
4	CLAMP	SK-14	433909-01	1	1	1	1
5	PIPE - WATER SUPPLY	ABS	3H9532G01	1	1	1	1
6	DRAIN PIPE	PVC	3H0394-01	1	1	1	1
7	HOSE	7711-2226 L=115	3H9588-10	1	1	1	1
8	TIE	CV-150	7920-0003	3	3	3	3



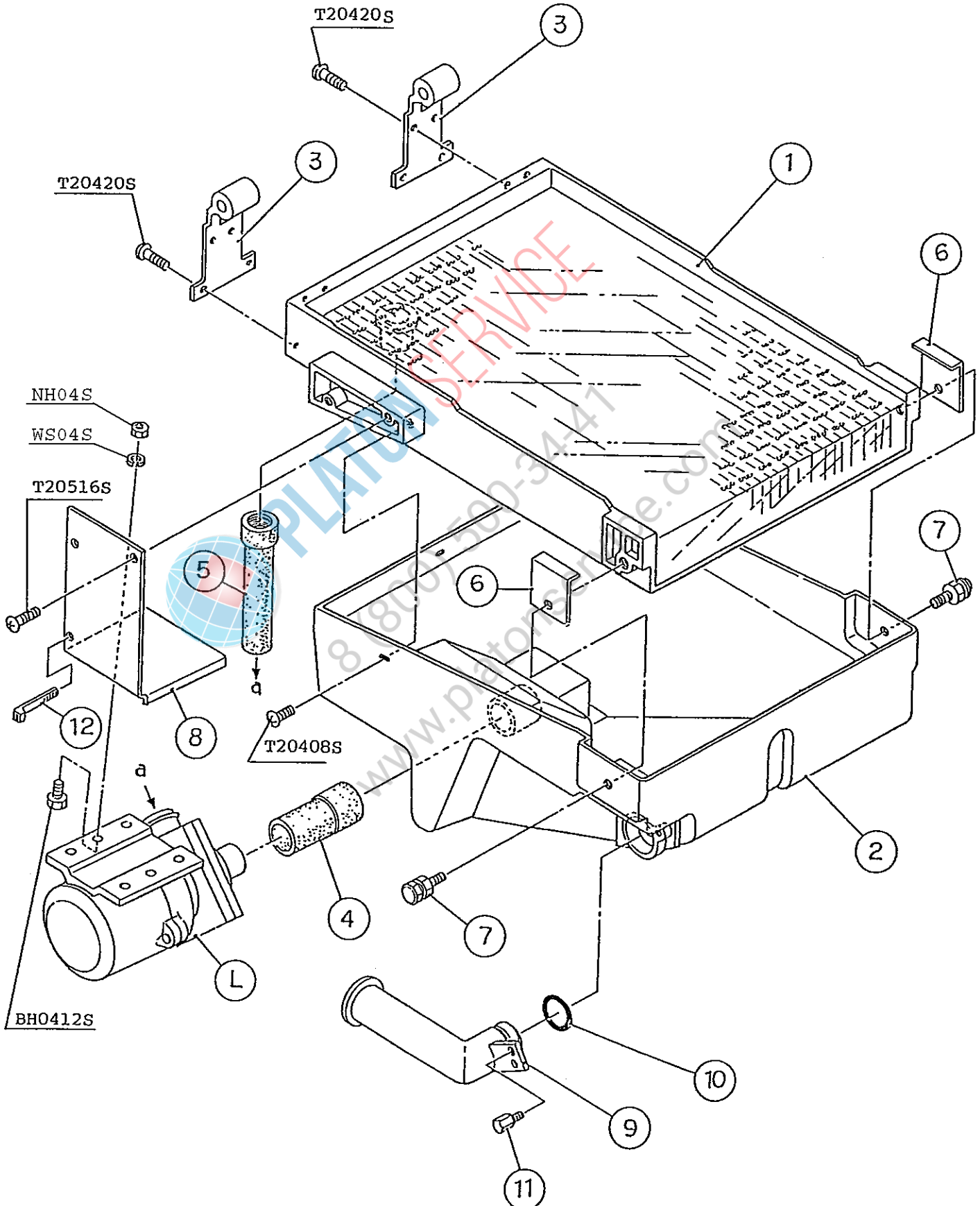
HE

MODEL : IM-130WME IM-130WME-23								TITLE : G. LABEL LOCATION	
INDEX NO.	DESCRIPTION	MATERIAL OR MODEL NUMBER	PART NUMBER	REQ'D NUMBER					
				H-1	H-2,J-0 K-0,A-0 B-0,C-0 D-0	D-1 E-0	E-1 F-0 G-0		
1	NAMEPLATE		N/A	1	1	1	1		
2	LABEL - SWITCH	PVC FILM	454374-01	1	1	1	1		
3	LABEL - GROUND	PVC FILM	451712-01	1	1	1	1		
4	CONTROL LABEL	PVC FILM	340941-01	1	1	1	1		
5	LABEL - VOLUME	PVC FILM	4X3839-01	1	1	1	1		
6	LABEL - R-404A	PES FILM	453230-01	1	1x				
7	CAUTION LABEL	PVC FILM	452552-01	1	1	1	1		
8	LABEL - TERMINAL	PAPER	452379-03	1	1	1	1		
9	LABEL - TERMINAL	PAPER	452379-04	1	1	1	1		
10	LABEL - DRAIN WATER	PES FILM	418029-01	1	1x				
11	LABEL - DRAIN WATER (INLET)	PES FILM	418029-04	1	x				
12	LABEL - DRAIN WATER (OUTLET)	PES FILM	418029-05	1	x				
13	LABEL - CONNECTION	PVC FILM	464541-01		1	1	1		
14	MAINTENANCE LABEL - EXTERIOR	PETP FILM	455837-01	1	1	1	1		
15	LABEL-CONTROLLER BOARD	PAPER	467627-01				1		

IM-130WME
IM-130WME-23

H. WATER PAN ASSY

(D-1) (E-0) (E-1) and later
(A-0) (B-0) (C-0) (D-0)
(H-1) (H-2) (J-0) (K-0)

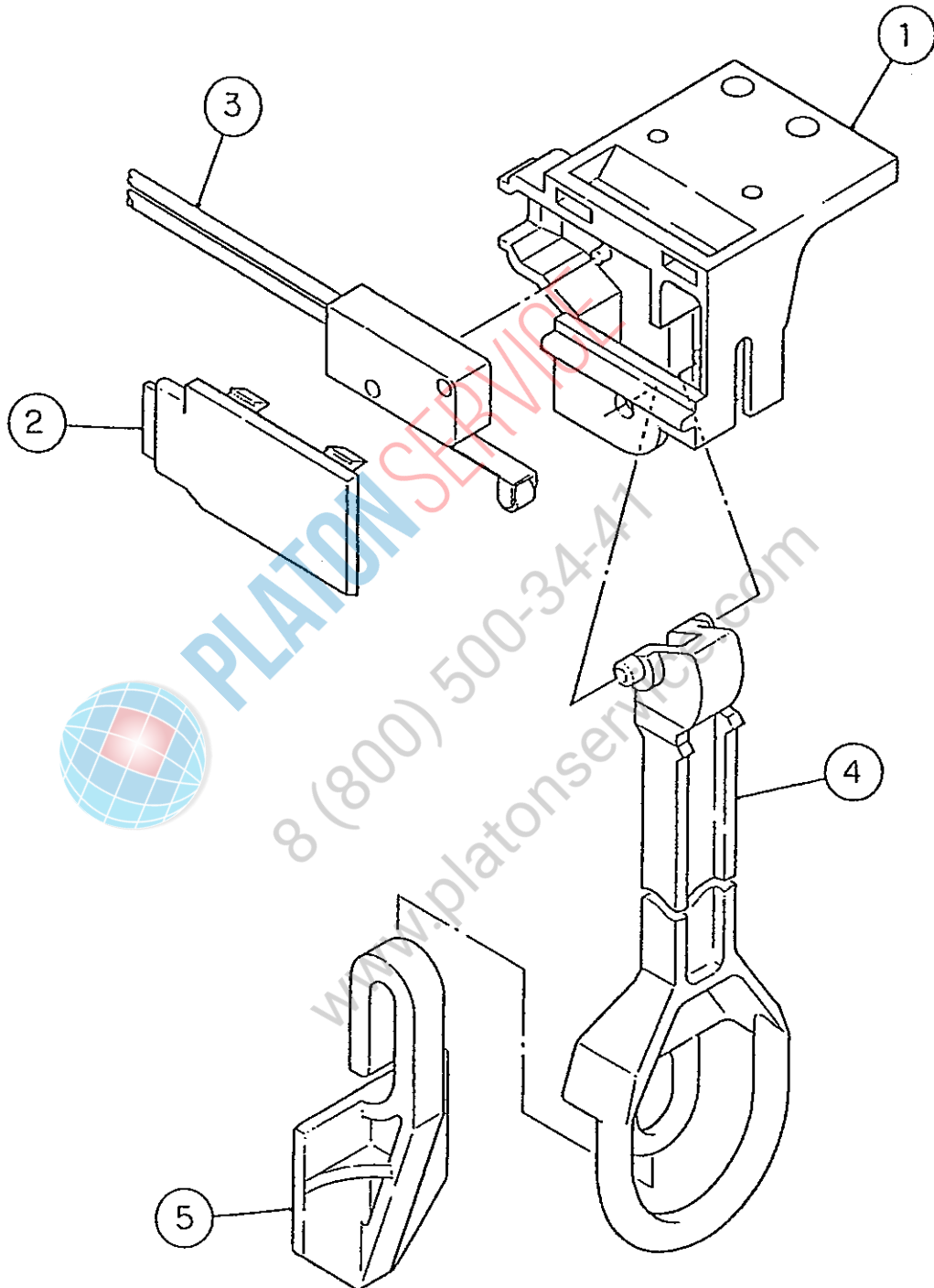


HE

MODEL : IM-130WME							
IM-130WME-23				TITLE : H. WATER PAN ASSY			
INDEX NO.	DESCRIPTION	MATERIAL OR MODEL NUMBER	PART NUMBER	REQ'D NUMBER			
				H-1	H-2,J-0 K-0,A-0 B-0,C-0 D-0	D-1 E-0	E-1 F-0 G-0
L	PUMP MOTOR ASSY	(S-9693)	316043A08	1	1	1	1
1	WATER PLATE	-	2H0833G02	1	1	1	1
2	WATER PAN	ABS	2H2286G01	1	1	1	1
3	HANGER - WATER PAN	-	3H2059-01	2	2	2	2
4	TUBING - PUMP SUCTION	SI	425437-01	1	1	1	1
5	TUBING - DISCHARGE	SI	425436-01	1	1	1	1
6	BRACKET	S.S	402957-01	2	2	2	2
7	SCREW - SPRING HOOK	AC	4H2582G01	2	2	2	2
8	BRACKET - PUMP MOTOR	PAINTED STEEL	3H1437-01	1	1	1	1
9	PIPE - OVERFLOW	ABS	315530-01	1	1	1	1
10	"O" RING	G-25	7611-G025	1	1	1	1
11	THUMBSCREW	ABS, S.S	415949G01	1	1	1	1
12	TIE	CV-100	7920-0002	1	1	1	1

HE,CHINA

MODEL : IM-130WME IM-130WME-23 TITLE : H. WATER PAN ASSY							
INDEX NO.	DESCRIPTION	MATERIAL OR MODEL NUMBER	PART NUMBER	REQ'D NUMBER			
				G-1	G-2 T-0	T-1,U-0 V-0,L-0	
L	PUMP MOTOR ASSY	(S-9693)	316043A08	1	1	1	
1	WATER PLATE	-	2H0833G02	1	1	1	
2	WATER PAN	ABS	2H2286G01	1	1	1	
3	HANGER - WATER PAN	-	3H2059-01	2	2	2	
4	TUBING - PUMP SUCTION	SI	425437-01	1	1	1	
5	TUBING - DISCHARGE	SI	425436-01	1	1	1	
6	BRACKET	S.S	402957-01	2	2	2	
7	SCREW - SPRING HOOK	AC	4H2582G01	2	2	2	
8	BRACKET - PUMP MOTOR	PAINTED STEEL	3H1437-01	1	1	1	
9	PIPE - OVERFLOW	ABS	315530-01	1	1	1	
10	"O" RING	G-25	7611-G025	1	1	1	
11	THUMBSCREW	ABS, S.S	415949G01	1	1	1	
12	TIE	CV-100	7920-0002	1	1	1	



HE

MODEL : IM-130WME							
IM-130WME-23				TITLE : J. BIN CONTROL SWITCH ASSY			
INDEX NO.	DESCRIPTION	MATERIAL OR MODEL NUMBER	PART NUMBER	REQ'D NUMBER			
				H-1	H-2,J-0 K-0,A-0 B-0,C-0 D-0	D-1 E-0	E-1 F-0 G-0
1	BRACKET	PC	2H2043-01	1	1	1	1
2	COVER - BRACKET	PC	4H8785-01	1	1	1	1
3	MICROSWITCH	ABV1636618F2	456432-02	1	1	1	1
4	ACTUATOR	PC	3H1369-02	1	1	1	1
5	DETECTOR	ABS	311044-01	1	1	1	1

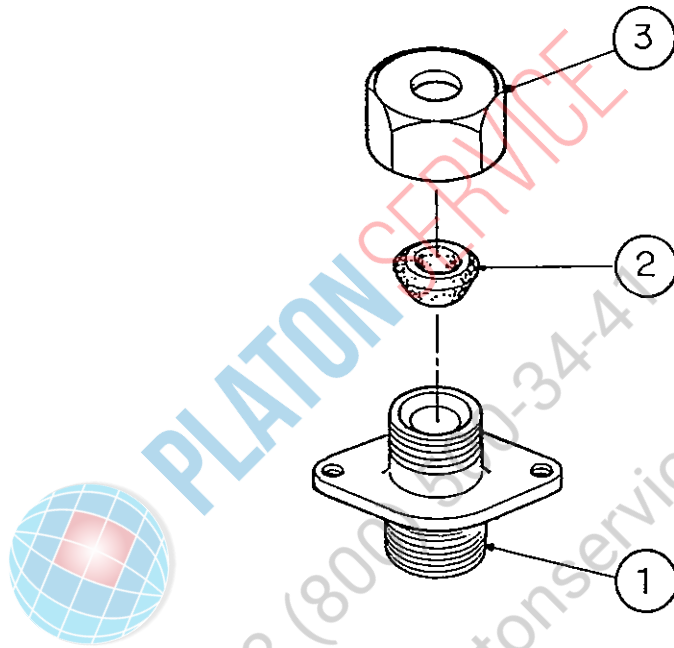
HE,CHINA

MODEL : IM-130WME IM-130WME-23								TITLE : J. BIN CONTROL SWITCH ASSY			
INDEX NO.	DESCRIPTION	MATERIAL OR MODEL NUMBER	PART NUMBER	REQ'D NUMBER							
				G-1	G-2 T-0	T-1,U-0 V-0,L-0					
1	BRACKET	PC	2H2043-01	1	1	1					
2	COVER - BRACKET	PC	4H8785-01	1	1	1					
3	MICROSWITCH	ABV1636618F2	456432-02	1	1	1					
4	ACTUATOR	PC	3H1369-02	1	1	1					
5	DETECTOR	ABS	311044-01	1	1	1					

IM-130WME
IM-130WME-23

K. FITTING (P) ASSY

(D-1) (E-0) (E-1) and later
(A-0) (B-0) (C-0) (D-0)
(H-1) (H-2) (J-0) (K-0)



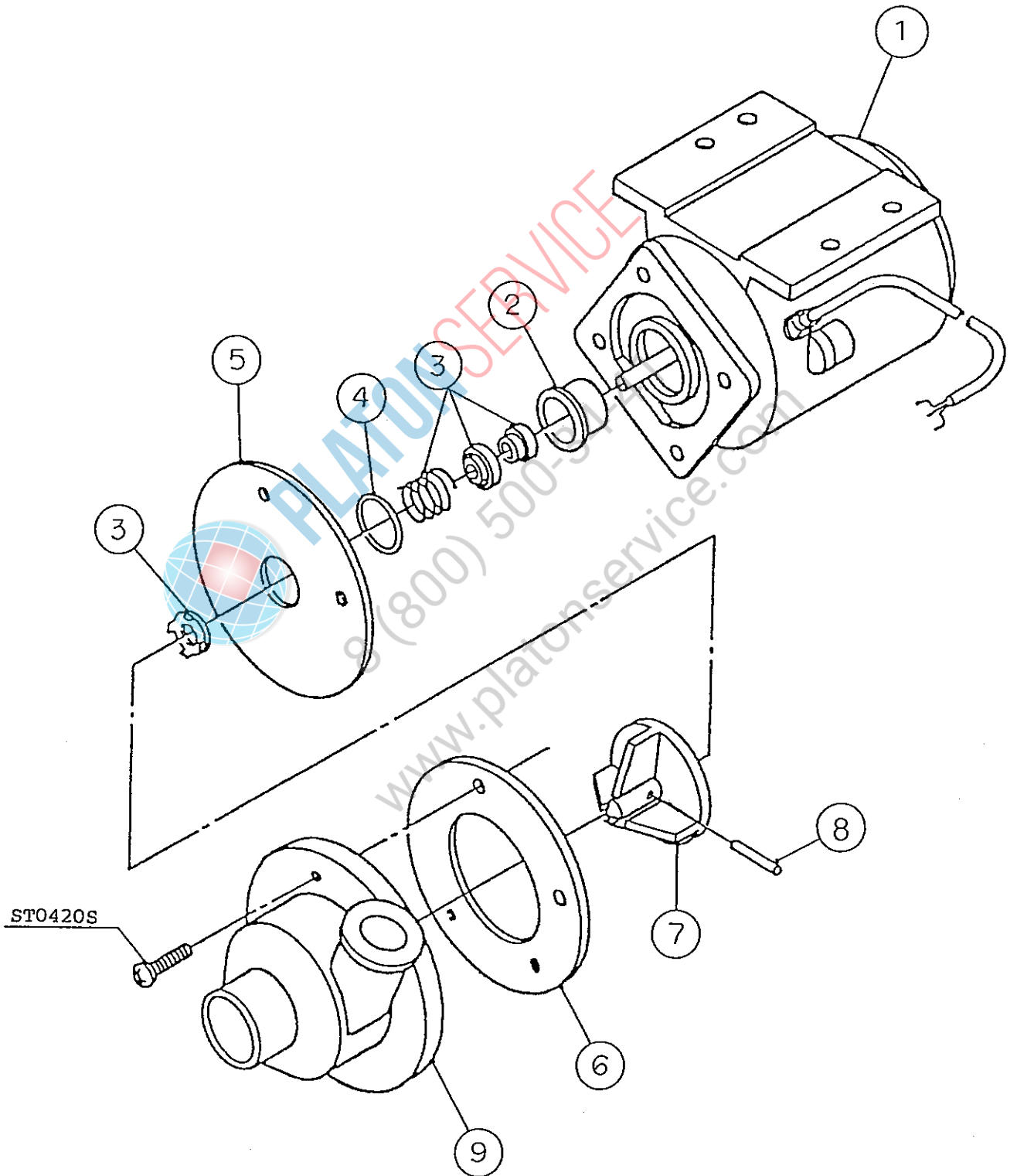
HE,CHINA

MODEL : IM-130WME							
IM-130WME-23				TITLE : K. FITTING (P) ASSY			
INDEX NO.	DESCRIPTION	MATERIAL OR MODEL NUMBER	PART NUMBER	REQ'D NUMBER			
				G-1	G-2 T-0	T-1,U-0 V-0,L-0	
1	FITTING (K)	BRASS	3H7961-01	1	1	1	
2	PACKING (A)	SY. R	415715-01	1	1	1	
3	NUT (A)	BRASS	415713-01	1	1	1	

IM-130WME
IM-130WME-23

L. WATER PUMP ASSY

(D-1) (E-0) (E-1) and later
(A-0) (B-0) (C-0) (D-0)
(H-1) (H-2) (J-0) (K-0)

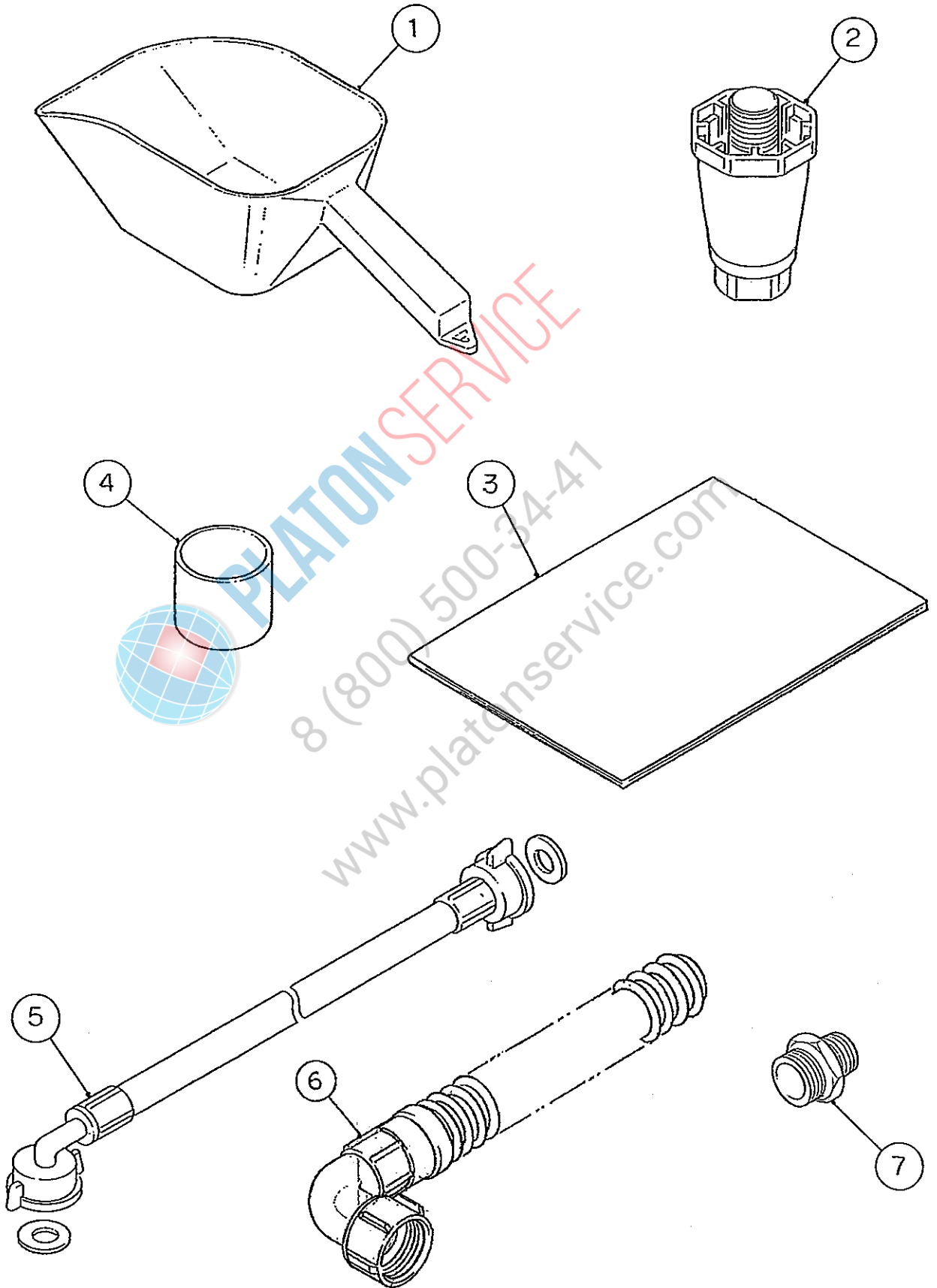


HE

MODEL : **IM-130WME**
IM-130WME-23

TITLE : **L. WATER PUMP ASSY**

INDEX NO.	DESCRIPTION	MATERIAL OR MODEL NUMBER	PART NUMBER	REQ'D NUMBER			
				H-1	H-2,J-0 K-0,A-0 B-0,C-0 D-0	D-1 E-0	E-1 F-0 G-0
1	PUMP MOTOR	APTA4B2P10L2	451803-01	1	1	1	1
2	RETAINER	S.S	418584-01	1	1	1	1
3	MECHANICAL SEAL/R	HKU90-J9001	465627-01	1	1	1	1
4	"O" RING	P18	7611-P018	1	1	1	1
5	FLANGE - "O" RING	S.S	425640-01	1	1	1	1
6	PACKING	NR	425639-01	1	1	1	1
7	IMPELLER	ABS	424927-01	1	1	1	1
8	PIN	S.S	414102-01	1	1	1	1
9	PUMP HOUSING	ABS	208019-01	1	1	1	1



HE

MODEL : IM-130WME							
IM-130WME-23				TITLE : M. ACCESSORIES			
INDEX NO.	DESCRIPTION	MATERIAL OR MODEL NUMBER	PART NUMBER	REQ'D NUMBER			
				H-1	H-2,J-0 K-0,A-0 B-0,C-0 D-0	D-1 E-0	E-1 F-0 G-0
1	SCOOP	PE	208185-01	1	1	1	1
2	LEG	SDKO-90HE-NS	446729-01	4	4	4	4
3	INSTRUCTION MANUAL	PAPER	91E1AX20F	1	1	1	1
4	CAP	PE	417323-01	1	1	1	1
5	INLET HOSE	HOSH01	450722-01	2	2	2	2
6	OUTLET HOSE	62506	452365-01	2	2	2	2
7	ADAPTER - NIPPLE	H.140.1	450724-01	2	2	2	2

HE,CHINA

MODEL : IM-130WME							
IM-130WME-23				TITLE : M. ACCESSORIES			
INDEX NO.	DESCRIPTION	MATERIAL OR MODEL NUMBER	PART NUMBER	REQ'D NUMBER			
				G-1	G-2 T-0	T-1,U-0 V-0,L-0	
1	SCOOP	PE	208185-01	1	1	1	
2	LEG	SDKO-90HE-NS	446729-01	4	4	4	
3	INSTRUCTION MANUAL	PAPER	91E1AX20F	1	1	1	
		(CHINA)	L1E1AX301			1	
4	CAP	PE	417323-01	1	1	1	
5	INLET HOSE	HOSH01	450722-01	2	2	2	
6	OUTLET HOSE	62506	452365-01	2	2	2	
7	ADAPTER - NIPPLE	H.140.1	450724-01	2	2	2	